



NEIGHBORHOOD PATHWAY

Sample site size – 20,000 sq. ft.

COST ESTIMATES	cost per unit	units	total cost
construction			
site grading	contingent on site conditions		TBD
walkway/paving materials			
compacted crushed gravel	\$26/cu. yd.	63	\$1,638
landscape materials			
topsoil	\$20/cu. yd.	20	\$400
plant materials			
4' upright shrub, viburnum	\$40 ea.	80	\$3,200
6' flowering tree, flwg. plum	\$95 ea.	12	\$1,140
wildflowers	\$0.20/s.f.	500	\$100
furnishings			
waste receptacle	\$600 ea.	2	\$1,200
subtotal cost	\$0.38/s.f.		\$7,678
contingency 10%			\$768
TOTAL PROJECT COST			\$8,446

IDEAL LOCATION

- An area where blocks are very long and vacant parcels can be used to create a walkway mid block. The project space should be a minimum of two lots wide and two lots deep.
- Large vacant parcels on the corner that already serve as informal walkways.

BENEFITS AND OPPORTUNITIES

- A park-like passive space for neighbors to enjoy.
- Creates a formal walkway connecting two parallel or perpendicular streets.

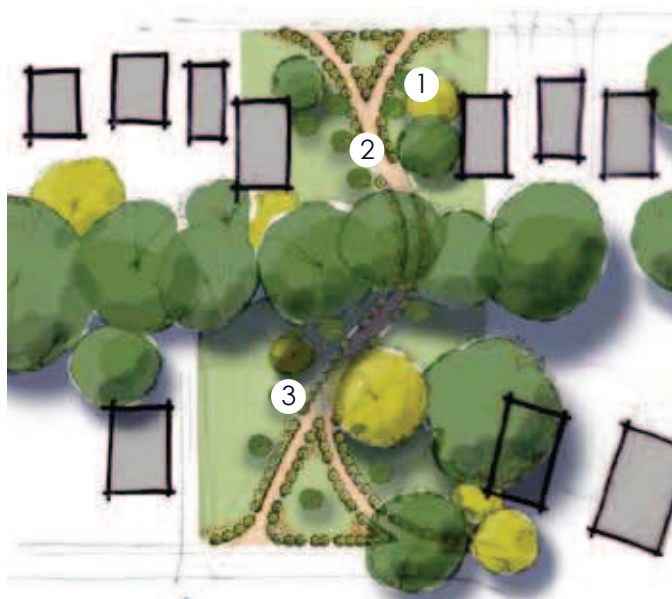
THINGS TO CONSIDER

- Creating a design that allows neighbors to see from one end of the pathway to the other will make this an appealing place to walk.
- Depending on the site, solar lighting should be considered.
- Because pedestrian traffic may be directed through a residential area, neighbors living on all sides of the project should be consulted and in support of the project.

LEVEL OF COMMUNITY COMMITMENT NEEDED

- This project requires a high level of teamwork during the installation and throughout the life of the project. It is important to get a group of people together who will be responsible for the long-term upkeep of the neighborhood pathway. This could be an informal group of neighbors, a block club, a church group or a community development corporation.
- Maintenance will include regular litter pick-up and seasonal mowing and pruning. Until plants are established weekly deep watering will be required. Depending on your plant selection, seasonal mulching may be required.

Depending on the purpose of your site, level of public access desired and surrounding land uses, fencing should be considered. Fencing costs vary according to site conditions, length and style.



- 1 flowering trees
- 2 gravel path
- 3 hedge row

Plan showing a neighborhood pathway layout



View showing a neighborhood pathway layout



Children enjoying riding through the Brooklyn Centre neighborhood pathway



Volunteers working on the construction of a pathway through the Brooklyn Centre Orchard



Bottles used as construction material for a pathway