

# » NATIVE PLANTING

Sample site size – 4,000 sq. ft.

COST ESTIMATES	cost per unit	units	total cost
<b>construction</b>			
site grading	contingent on site conditions		<b>TBD</b>
<b>landscape materials</b>			
topsoil	\$20/cu. yd.	20	<b>\$400</b>
straw	\$5/bale	200	<b>\$1000</b>
mulch	\$28/cu. yd.	40	<b>\$1,120</b>
cardboard (sq. ft.)		5000	
<b>plant materials *</b>			
native grasses and wildflower seed mix for 1/10 acre (smallest quantity available)	\$140	1	<b>\$140</b>
woodland, shrubland, prairie perennials	\$10	75	<b>\$750</b>
native trees	\$240	4	<b>\$960</b>
<b>furnishings</b>			
educational signage			<b>\$300</b>
<b>subtotal cost</b>	\$1.17/s.f.		<b>\$4670</b>
contingency 10%			<b>\$467</b>
<b>TOTAL PROJECT COST</b>			<b>\$5,137</b>

\* Choose plant types based on sun exposure and soil moisture.

Depending on the purpose of your site, level of public access desired and surrounding land uses, fencing should be considered. Fencing costs vary according to site conditions, length and style.

## IDEAL LOCATION

- A vacant lot in need of beautification.

## BENEFITS AND OPPORTUNITIES

- By using plants naturally found in Ohio, this project provides a habitat for birds, butterflies, and other wildlife.
- The root systems of native plants help soil absorb water, which helps to reduce erosion and runoff and improves local water quality.
- Native plants help clean the air and water by absorbing and processing pollutants.
- Add benches, bird houses, and plant identification signage to create a community gathering space and a place to educate visitors on the value of natural urban spaces.

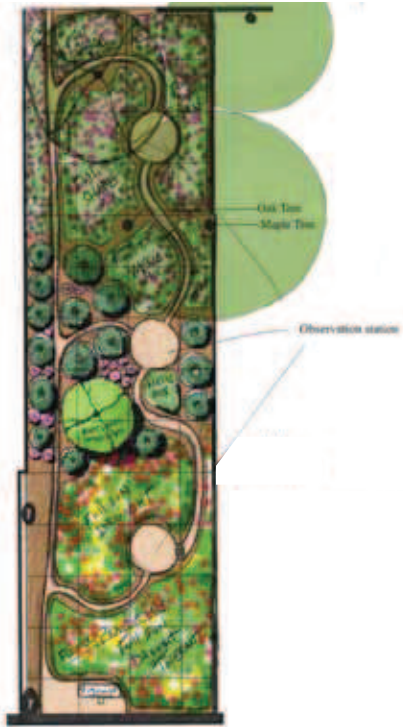
## THINGS TO CONSIDER

- It is recommended to build soil by sheet mulching (cold composting). Sheet mulching involves layering topsoil, mulch and cardboard over the existing ground. The layers must cure for at least 8 weeks. It is best to sheet mulch in fall and plant in early spring.
- Selecting a native plant mix that grows to a limited height will ensure that this project is low maintenance.
- Native plantings do best on sunny lots; some shade can be utilized with the correct plant selection. Avoid lots that are overrun with invasive or non-native plants.
- While it is illegal to remove native plants from public parks, native plant rescue groups organize legal plant rescue events from public and private property. Contact the Earth Day Coalition for more information. Once you have a native plant garden, you can begin seed collection, propagation and plant sharing.

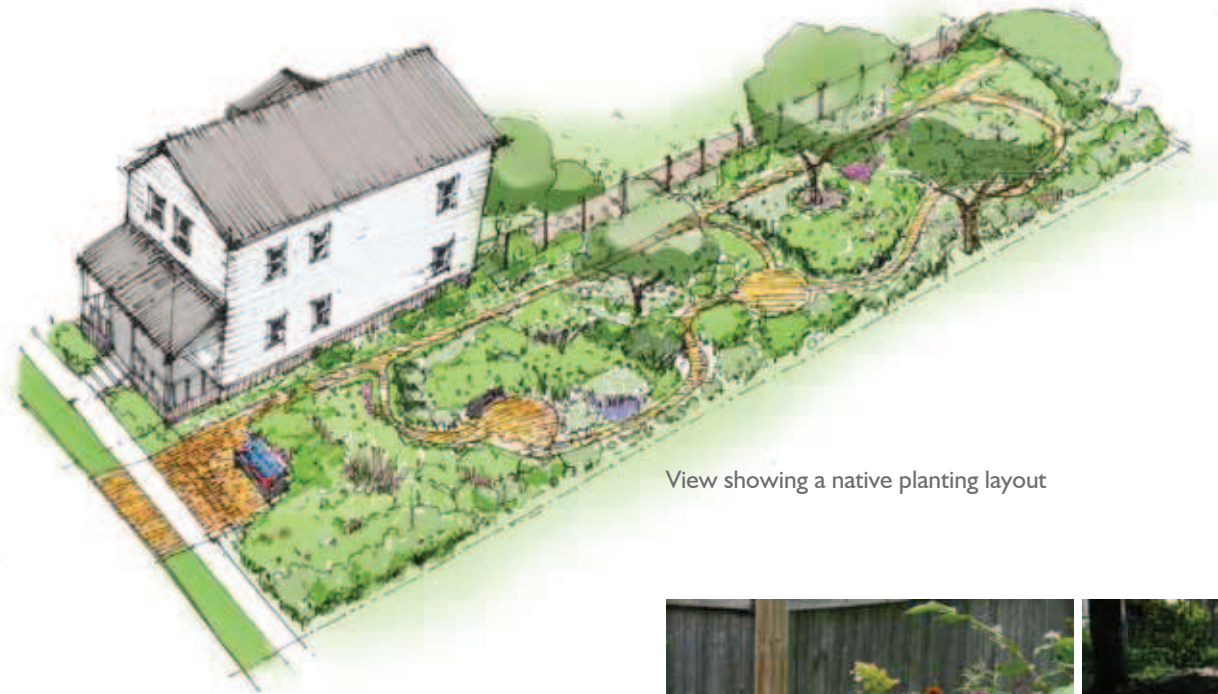
## LEVEL OF COMMUNITY COMMITMENT NEEDED

- This project requires a high level of teamwork at the time of preparation, installation, and until the plants are established in the first growing season. Native plants are adapted to northeast Ohio's local conditions and are easier to grow and maintain once they are established.
- Maintenance will include litter pick-up and seasonal trimming. Until plants are established, a weekly deep watering is necessary, unless one inch of rain has fallen. Depending on plant selection seasonal mulching may be required.

For information on native plant park design, sheet mulching and plant/tree selection, visit the Earth Day Coalition Naturehood website: [www.earthdaycoalition.org/naturehood\\_main.php](http://www.earthdaycoalition.org/naturehood_main.php)



Plan showing a native planting layout



View showing a native planting layout

## TO SEE A LOCAL NATIVE PLANTING

Reimagining Cleveland **Naturehood Site** – 3115 West 50th Street, Cleveland, OH

Reimagining Cleveland **Brooklyn Centre Naturalist Native Planting** – 3789 West 39th Street, Cleveland, OH

## FEATURED PROJECT LEADERS

### Brooklyn Centre Naturalists

A group of dedicated neighbors and business people formed Brooklyn Centre Naturalists in 2007 to educate and involve our community in creating a wildlife and people-friendly habitat in an urban setting. Brooklyn Centre is a place where residents make wildlife a priority because the health of our community depends on the health of our environment. Merging our natural heritage with our built heritage preserves our unique ecosystem.

*“The gardens are a destination for neighbors showing their out-of-town guests what Brooklyn Centre has to offer. We have had people from as far away as California who have heard about our project through volunteers or on-line. They stop by for a few moments of solitude in ‘a forest trail in the city’. What a delightful surprise!”*



Brooklyn Centre Naturalist Native Planting



Naturehood volunteers



Signage with information about native plants